

Crofty Multi Academy Trust

Potential Expansion

Portreath School

Two Additional Classrooms



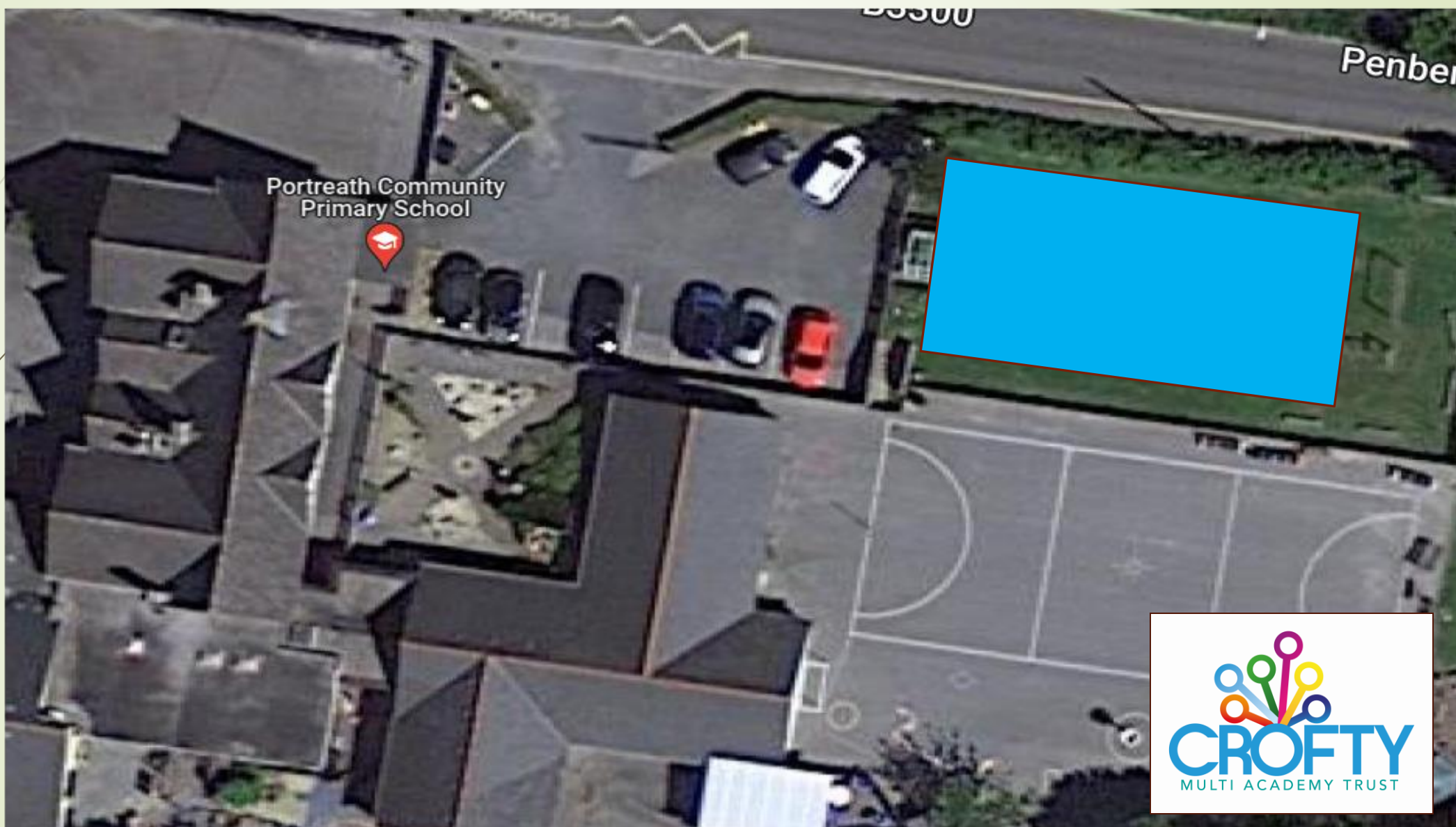
Portreath School



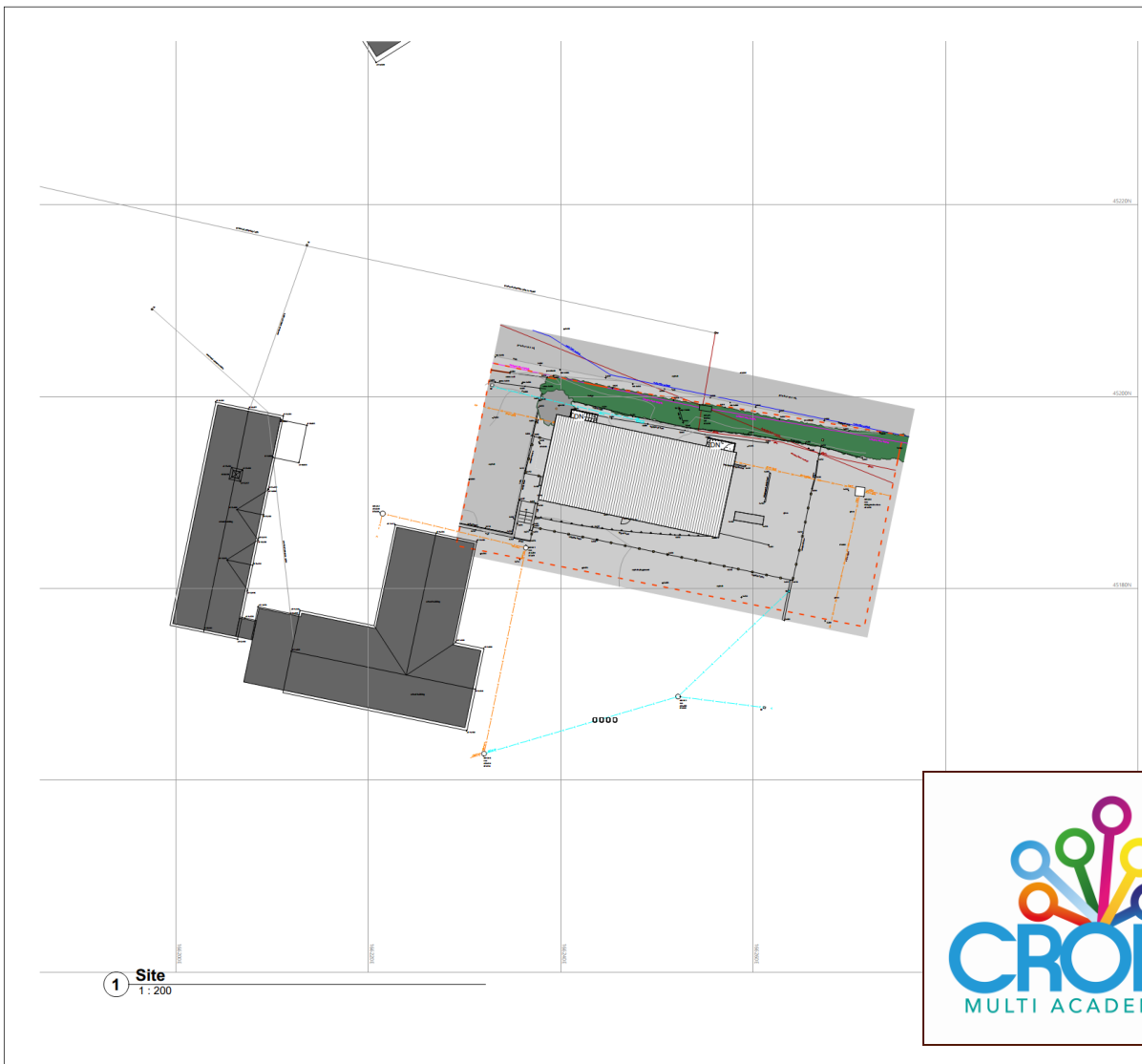
Portreath School



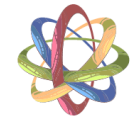
Portreath School – Ariel View



Portreath School – Ariel Plan



Rev	Description	Date



PROJECT		
Portreath Primary School Option Two		
TITLE		
K.A ENVIRONMENTAL SERVICES		
CLIENT		
Crofty Multi Academy Trust		
DRAWN BY	CHECKED BY	DATE
KA	KA	10/19/23
SCALE (@ A1)	PROJECT NUMBER	
1 : 200	1000	
DRAWING NUMBER	REV	
A101		

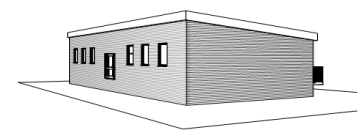
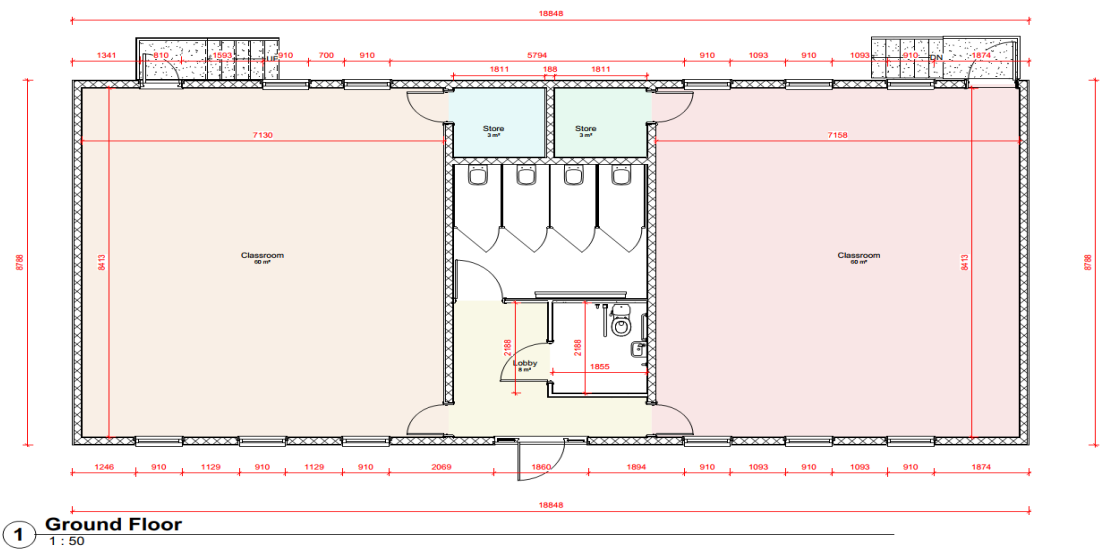
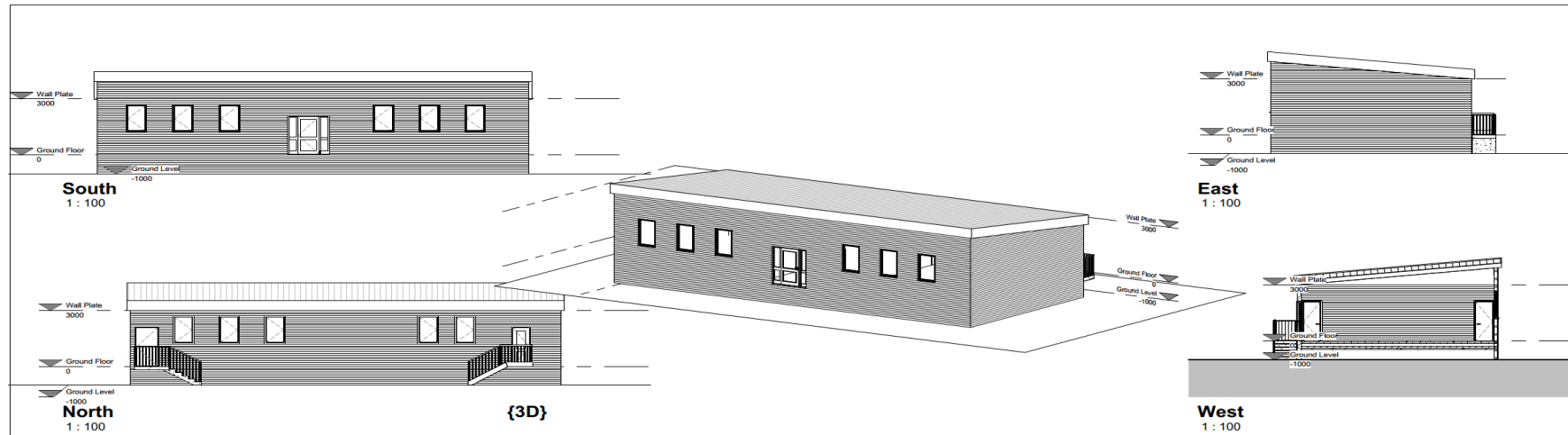
Portreath School – Proposed Location Picture 1



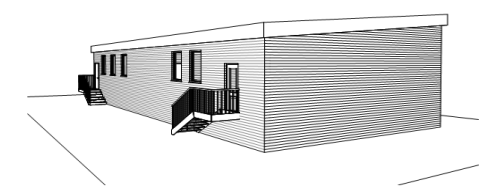
Portreath School – Proposed Location Picture 2



Portreath School – Proposed Design



7 3D View 1



8 3D View 2



PROJECT			
Portreath School			
TITLE			
Concept			
CLIENT			
Crofty Multi Academy Trust			
DRAWN BY	CHECKED BY	DATE	
KA	SA	16/08/23	
SCALE (@ A1)	PROJECT NUMBER		
As indicated	NA		
DRAWING NUMBER		REV	
A100			

Portreath School – Environmental Features

- Off-site construction methods which will reduce on-site waste as a result
- Use of renewable energy (ASHP) for heating provision rather than reliance on the grid
- Working with local contractors to include low-carbon design features
- Electricity and heating sub-metering to measure the use of energy throughout different areas of the building, to reduce wastage
- Creation of bat boxes alongside native trees
- Appropriate hedgerow planting
- Encouragement of sustainable travel through:
 - safe pedestrian and cyclist access arrangements,
 - provision of cyclist facilities
 - electric car charging points for staff and visitor use
 - promoting car share, both parents and staff



How Crofty are Already Making Changes to Support the Environment



Pictured Sithney School

Program to install LED Lighting
Across all the schools
80% complete

Pictured Lanner School

Program to install Solar Panel systems to meet all the energy needs within the Trust. Roskear and Lanner schools completed this year



Pictured Sithney School

Program of roofing upgrades including insulation. Sithney, Trannack & Parc Eglos completed this year



How Crofty Ensure Pupils are Environmentally Aware

Our Trust Pupil Council is a group of 32 children, two representatives from each of our schools. Working together as one they help make environmental improvements across our trust. In the first year, the Trust Pupil Council has already made some significant improvements. The focus last year was to reduce the energy usage in all our schools and increase and monitor the amount of recycling that takes place - both have these projects have been very successful.

In July this year, we held our own Eco Summit where we made 8 pledges for the coming school year; these pledges will encourage and enable our schools to save water, reduce the amount of plastic we are using, reduce the amount of clothing we are wasting by introducing 'swap shops', agreeing on a climate-friendly menu change for school meals, which will include 'wonky fruit and vegetables', reduce the number of cars on the roads during school times by encouraging walking and bike riding, whilst continuing to monitor energy usage and promoting recycling.

